

A woman with glasses and a dark jacket is sitting on the steps of a solar trailer. The trailer has a wooden interior and a green exterior. The background is a desert landscape with mountains and sparse vegetation. The text is overlaid on the image.

The #SolarShitshow and Camp Yellow Pine

www.MojaveGreen.org

Photo by Thomas Fjallstom

In this Presentation

...

Catastrophe of Big Solar in the Mojave Desert

#MoveSolarToTheCity

Camp Yellow Pine and the Act of Witness

The Jackrabbit Reading Series

Mizpah



#Put Solar
in the City

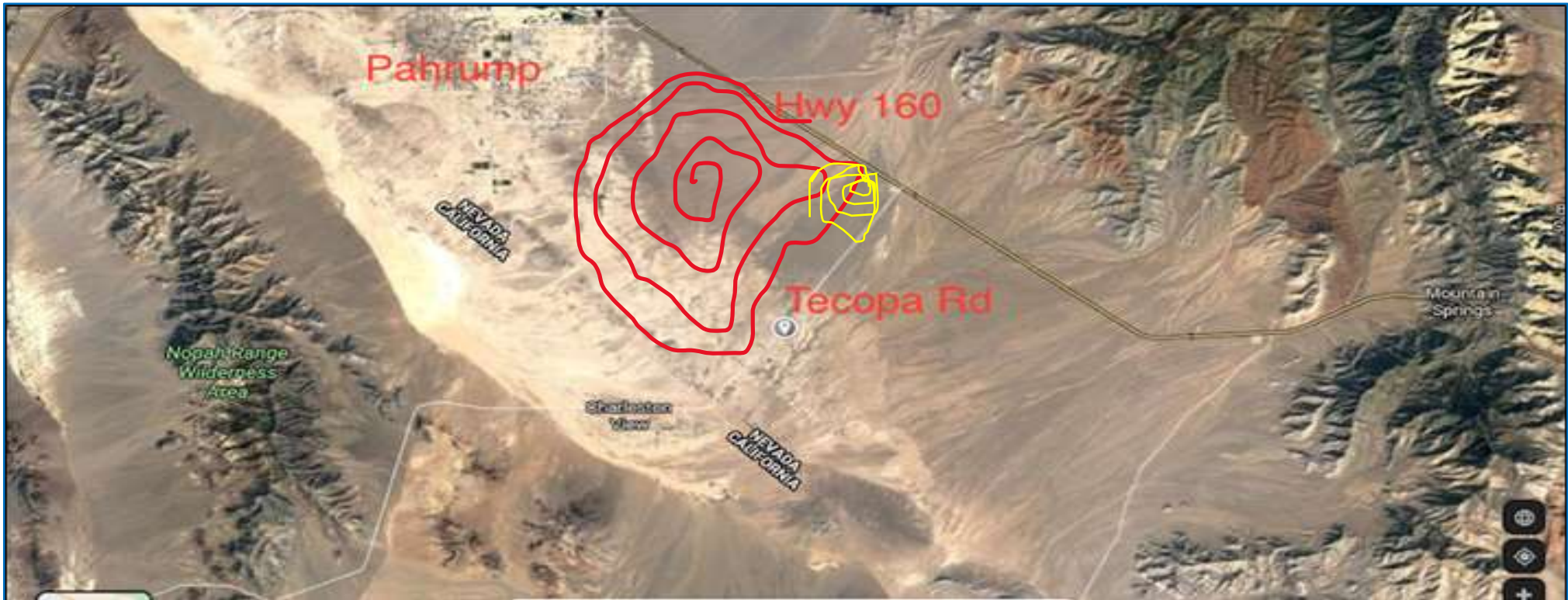
Problem:
Utility scale solar and wind
on public land destroys
critical habitat, fragile
ecosystems, and natural
carbon sequestration

Photo by Justin McAfee

The South

Pahrump Valley

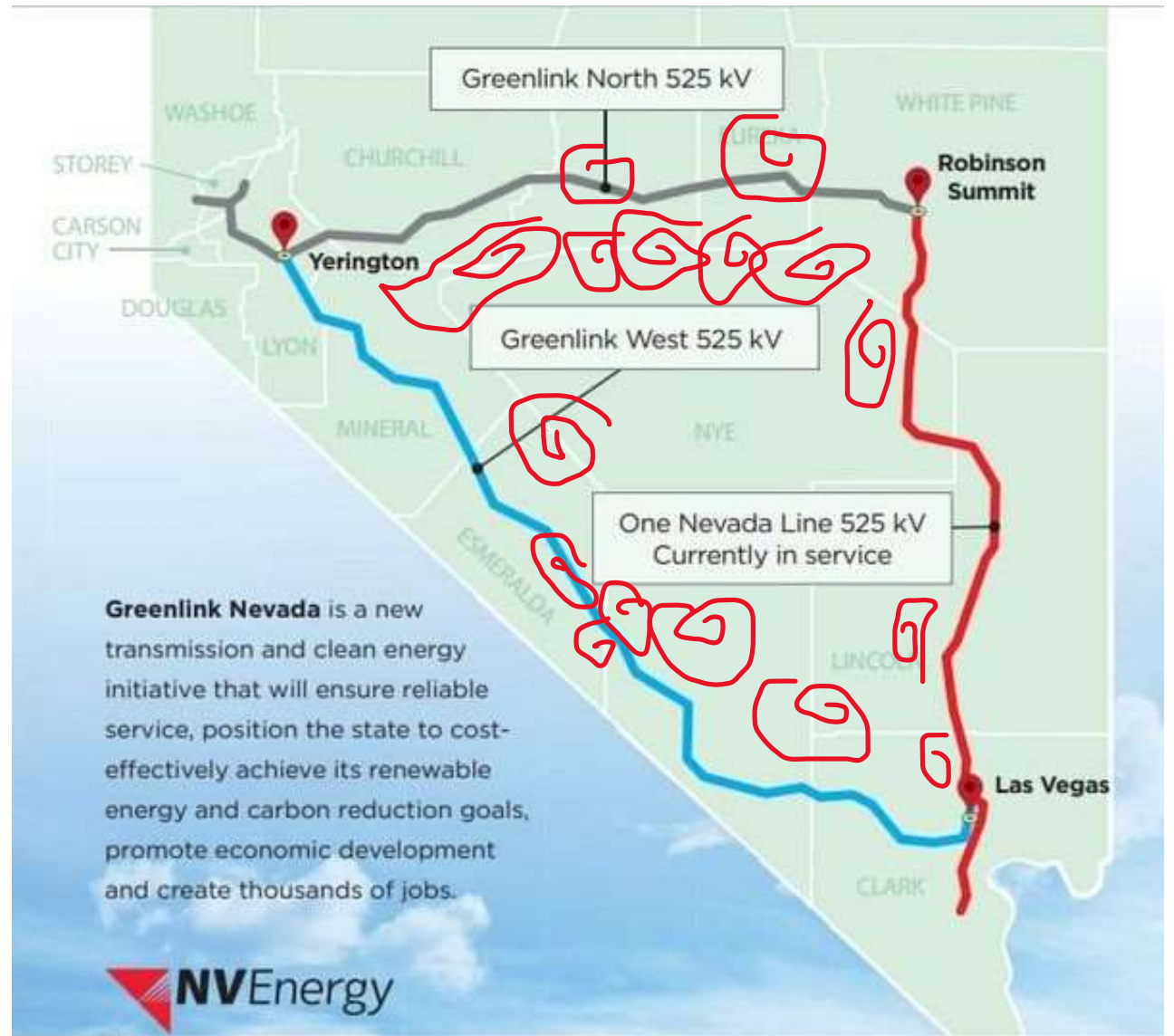
- Red squiggly: 7 solar applications, totally nearly 30,000 acres.
- Yellow squiggly: Yellow Pine Solar (3000 acres) is under construction. Half the power has been purchased by Monterey Bay Community Power and Silicon Valley Clean Energy
- Any land not protected (most public land in Nevada) is eligible for a solar or wind application.
- 92,000 Mojave Yucca on Yellow Pine Site. 500,000 on the chopping block in this valley.
- Golden Curren Solar is proposed to pick up at Yellow Pine southern border and run all the way to Cathedral Canyon



JUST THE BEGINNING

NV Energy's Greenlink Transmission line will open up hundreds of thousands of acres of remote wilderness for solar destruction.

- 2019: NV voted to increase Renewable Energy Portfolio to 50% by 2030 and zero carbon emissions by 2050
- 2021: SB 448 –Senator Chris Brooks and the "new energy economy." SB 448 requires NV Energy to build the Greenlink transmission line by 2029, undermining the environmental review and public process.





Why not put solar in desert valleys?

Why not replace desert valleys with solar panels?



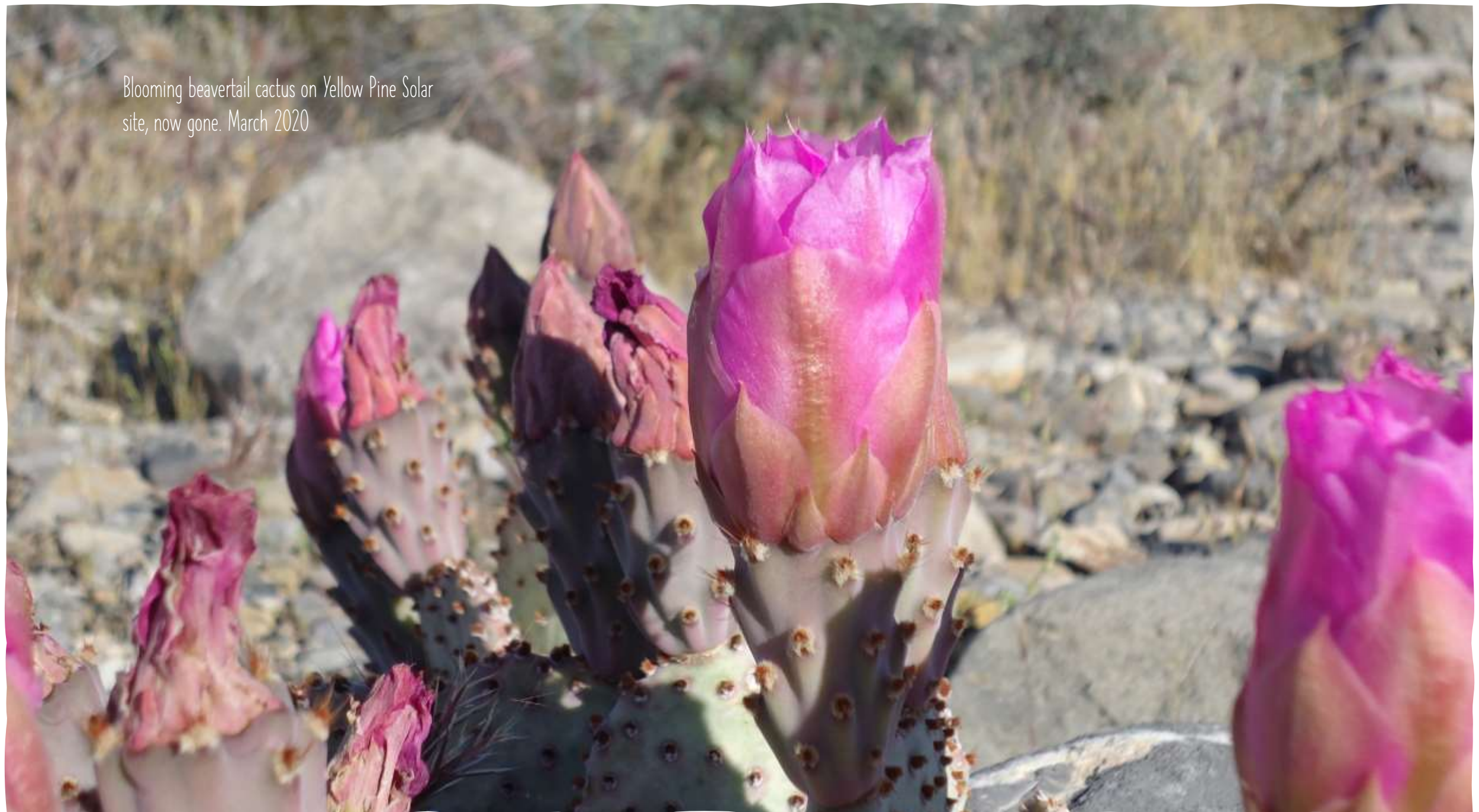
Yellow Pine site...flowering plants that
support bees, moths and other insects,
now bulldozed. March 2020



Yellow Pine site before it was destroyed...92,000
Mojave Yucca. March 2020.



Blooming beavertail cactus on Yellow Pine Solar
site, now gone. March 2020





Cryptobiotic crust with fungi on Yellow Pine solar site, now gone. This material on the surface of the desert keeps the soil underneath securely in place and prevents erosion. When intact, it stores carbon, just like a forest ecosystem. The California desert is storing about 10% of the state's carbon. The Nevada Desert is a larger area and likely storing far more. We need to quantify how much carbon the arid lands in Nevada are storing and which could be compromised by utility-scale solar and wind projects. Learn more at:

<https://storymaps.arcgis.com/stories/b0df13fa971b4557962967c2a77cd7c3>



Beginning of Yellow Pine solar construction: desert pavement is destroyed to create this road. The entire 3,000-acre site will be cleared. January 2022.

New "mowing" technique instead of traditional grading. Desert crust, yucca, creosote still destroyed. Poof dirt everywhere.



Yellow Pine Solar Site in May 2022



Desert pavement, yucca, creosote, cryptobiotic crust all gone.
January 2022.

Hauling away cut Yucca like
trash at Yellow Pine Solar.
January, 2022



Scraping away yucca and creosote. January 2022





Bulldozing and leveling Yellow Pine Solar site. January 2022.

Dust blowing off the Yellow Pine solar site, as seen from Tecopa Road, and a dust devil. Once the desert pavement is cleared, loose soil becomes airborne and is a hazard for humans. The dust contains micro-organisms including a fungal spore that causes valley fever, a deadly respiratory illness. The soils in Southern Nevada also contain naturally occurring asbestos, and scientists have found elevated rates of mesothelioma. Scientists have only begun to study this:

https://www.unlv.edu/sites/default/files/page_files/27/Sciences-NaturallyOccurringAsbestos-FinalReport.pdf

What other harmful elements does this soil contain?





Dust blowing off cleared Yellow Pine Solar site along Tecopa Road. May 2022.

Spraying 350,000 gallons of water per day during construction to try to keep the dust down since the desert pavement has been removed. Nextera Energy sourced water from the Pahrump groundwater basin, which is already over-allocated and being depleted. May 2022.



Moving vast amounts of soil around the site. They build culverts to alter the flow of water. April, 2022





Poles being delivered. May 2022.

For every mounting pole, they need to drill into the earth, and this creates an explosion of soil. There will be thousands of mounting poles. May 2022.



March 2020

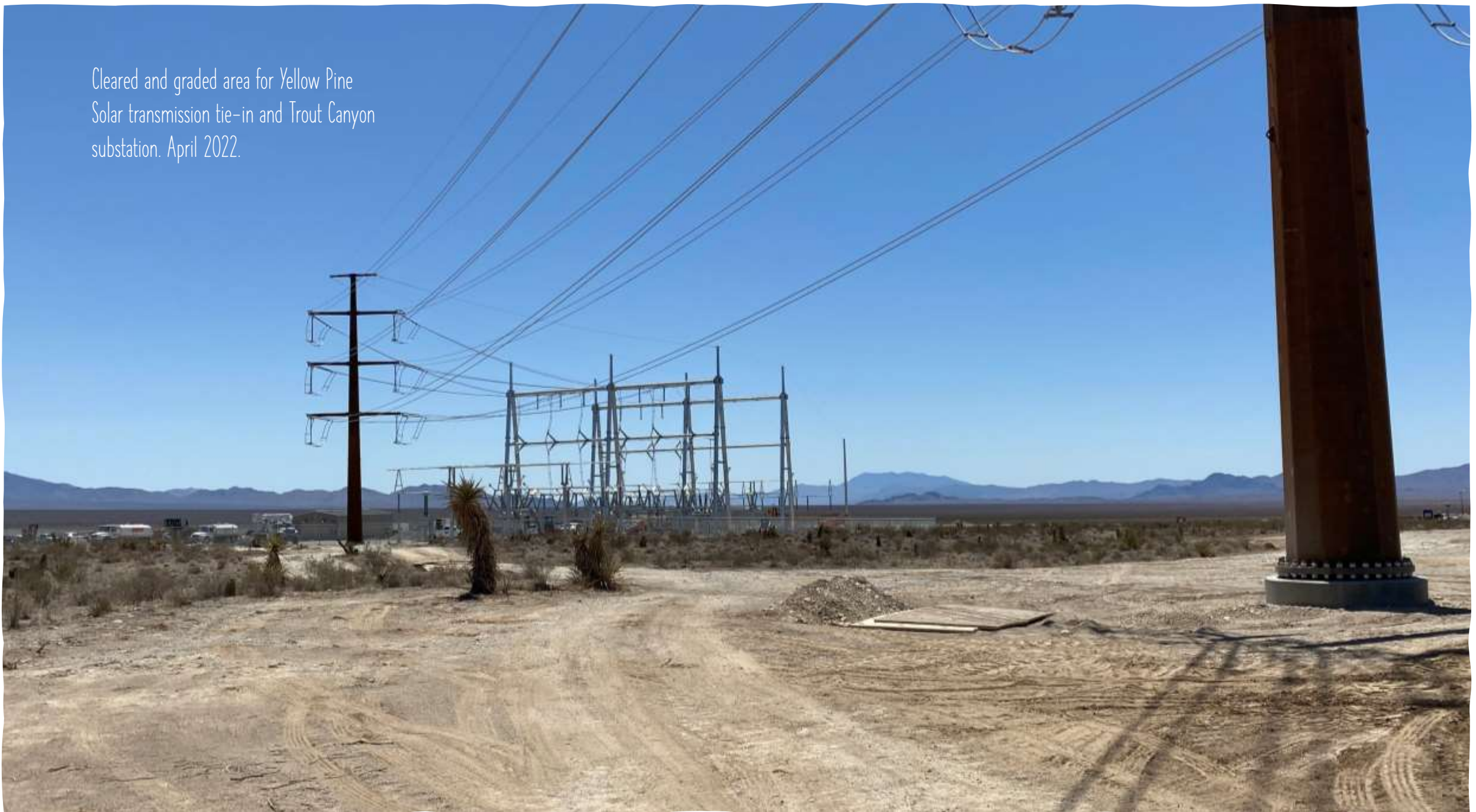


May 2022



Yellow Pine solar site before and after. Notice the desert pavement gone and the cut yucca. Notice the dust the vehicle is creating. This part of the site has been "mowed" instead of the traditional grading, a technique that Bureau of Land Management is promoting as much more environmentally friendly. But this is now a dead place.

Cleared and graded area for Yellow Pine
Solar transmission tie-in and Trout Canyon
substation. April 2022.





A better way: #MoveSolarToTheCity

- A very conservative estimate of parking lot area in the United States is 2.5 Million acres
- Sign the petition to Biden and Haaland to protect natural ecosystems and improve our suburban landscapes: www.change.org/MoveSolarToTheCity
- Start solar-shade initiatives on the local level by discussing with community leaders, local businesses and landowners
- Pressure local utility companies not to purchase power from destructive solar facilities like Yellow Pine.
- Photo on left is a Walmart Parking lot in Huntington Beach, CA. Photo on right is the Springs Preserve parking lot in Las Vegas, NV.



One must be
absolutely
modern.

[Arthur Rimbaud, 1873]

To be absolutely modern is to embrace poetry as a point of action, and the point of action as poetry.

To be absolutely modern is to see the world as one piece, to see the self and the other as one piece, to see the human and nonhuman as one piece, to see the inner workings of things not as mechanical parts but as truly *alive*.

Photo by Justin McAfee

Poetic Action

Poetry is not a process.

Poetry is an Act.

You know what a process leads to and how it ends. You cannot predict the consequences of an act.

All true poetry starts out not knowing where it is going or how it is going to get there. It gives itself over to the action.

(In this way true poetry is an act of faith.)

I am engaging in poetic action, the consequences of which I cannot foresee.

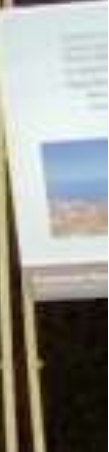
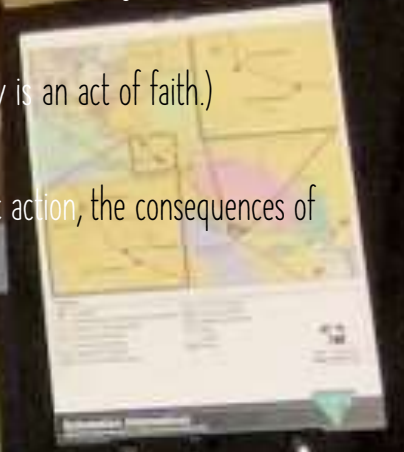
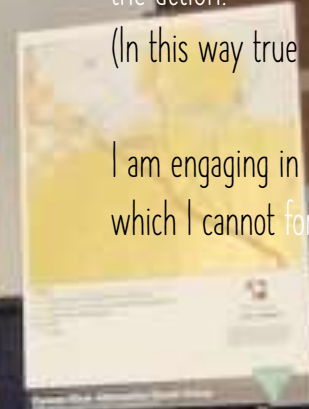
The moment of poetry and the poetic act are always an entrance to a new world

It is transformation
without violence

a blade of grass that grows through cement



NO BIG SOLAR





This is a form of poetic action in which I am maintaining a presence in this valley. I love the word vigil because it means "keeping watch." It also means mourning for something gone, and it has the connotation of a light in the darkness. The camp is a gathering place, and that is what a poem does: it gathers anything and everything into itself.

Camp Yellow Pine

a vigil, an act of witness, a gathering place



*I could turn and live
with the animals.
- Walt Whitman*

Photo by Dan Paterson

Reclaiming my animal
nature...outside Rabbit Camp,
south of Yellow Pine Solar, on
the proposed Golden Currant
Solar Site



Photo by Lisa Ortega

Photo by Lisa Ortega

A poetry in motion. The poetry is in the act of gathering as much as it is in the poems themselves. The poetry happens between us and the land.

The Jackrabbit Reading Series

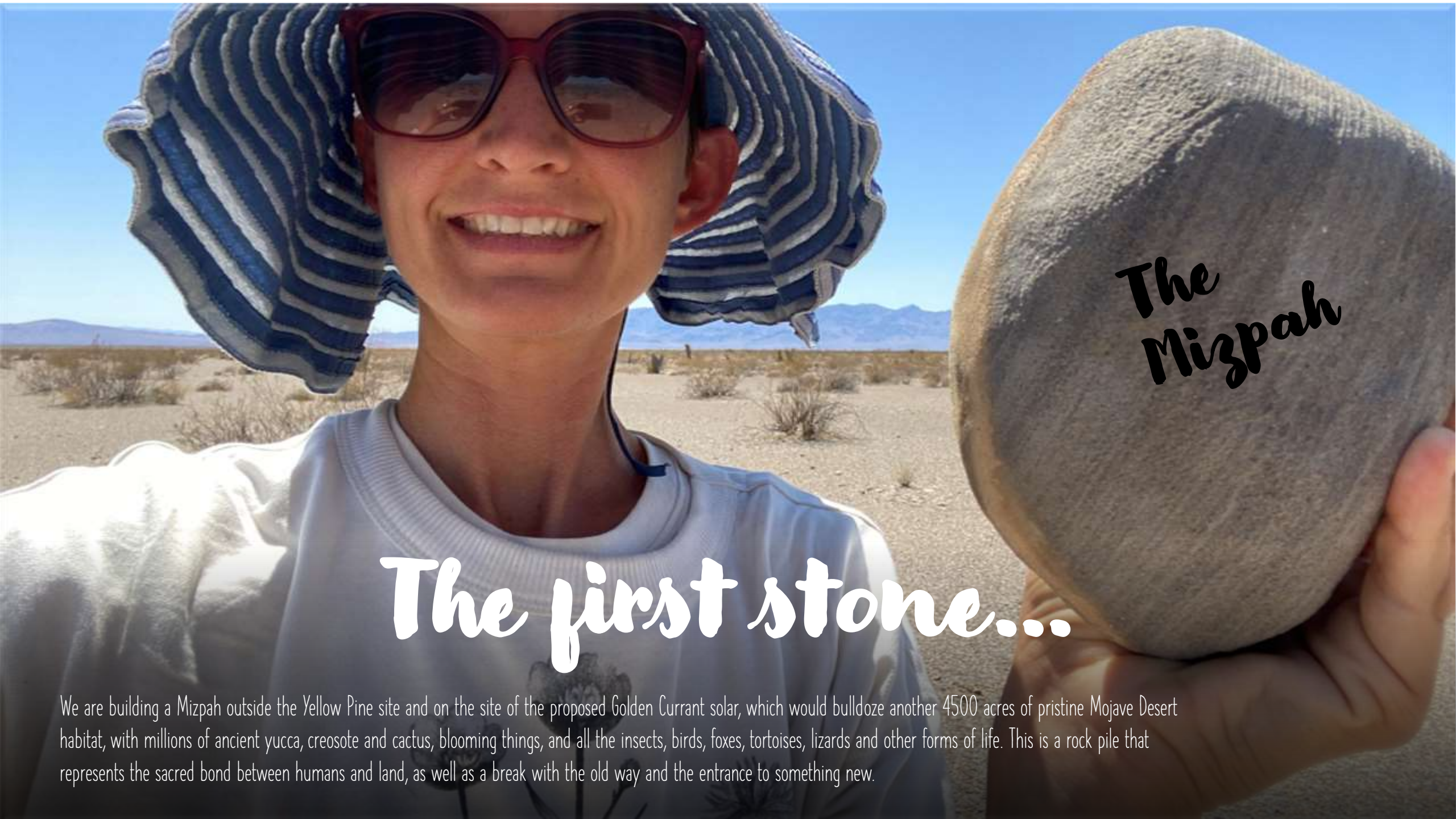




Camp Yellow Pine

Photo by Dan Paterson





*The
Mizpah*

The first stone...

We are building a Mizpah outside the Yellow Pine site and on the site of the proposed Golden Curreant solar, which would bulldoze another 4500 acres of pristine Mojave Desert habitat, with millions of ancient yucca, creosote and cactus, blooming things, and all the insects, birds, foxes, tortoises, lizards and other forms of life. This is a rock pile that represents the sacred bond between humans and land, as well as a break with the old way and the entrance to something new.

Tell the BLM: **NO GOLDEN CURRANT SOLAR.** It would pick up at the Yellow Pine fence and run towards the CA state line, right past the rabbit camp. It would bulldoze this giant Mojave Yucca, along with thousands of others. We can't afford to lose the carbon storage of these wild ecosystems. Golden Currant would run up to the historic Cathedral Canyon and the vast Mesquite Woodland around it. It would border Stump Springs Area of Critical Environmental Concern, a historic water stop on the Old Spanish Trail, and where the Yellow Pine tortoises have been relocated.



Golden Currant Site. January 2022
Photo by Justin McAfee

Rare barrel cactus, Yucca,
and desert pavement on
Golden Carrant Solar site
outside of Yellow Pine
Solar. Nopah Mountain
range in background.
March, 2022.





Historic Cathedral Canyon, within 100 feet of Golden Currant Solar application. January 2020



Historic grave of Queho at Cathedral Canyon, within 200 feet of Golden Currant Solar site. February 2020.

Golden Currant solar site. March, 2022.

Tell the BLM no to Golden Currant Solar at the July 19 and 20th public meeting: <https://www.blm.gov/press-release/bureau-land-management-hold-variance-process-virtual-public-information-forums-golden>



www.MojaveGreen.org

Twitter: @MojaveGreen8

www.change.org/MoveSolarToTheCity

9/24 Candlelight Vigil and Rally:

<https://MoveSolarToTheCity.eventbrite.com>